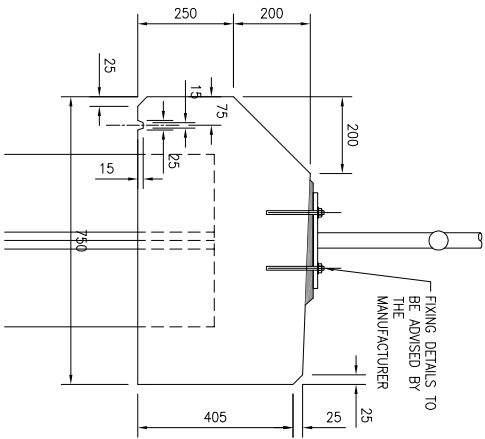
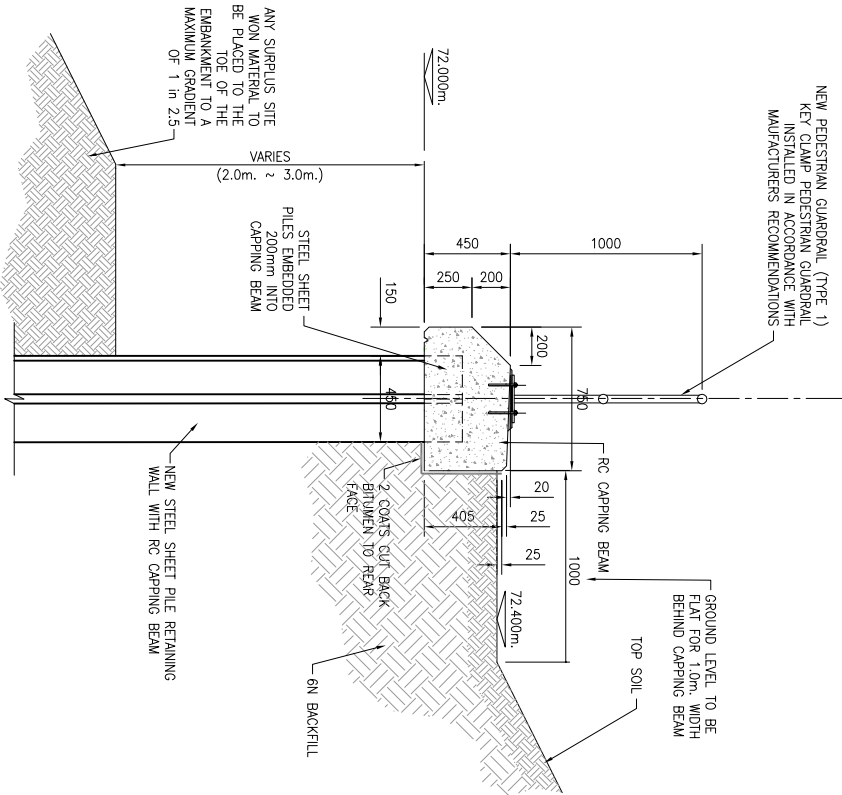


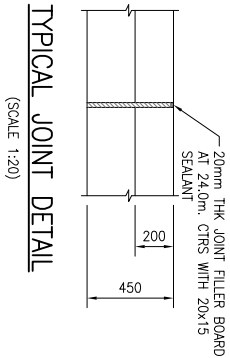
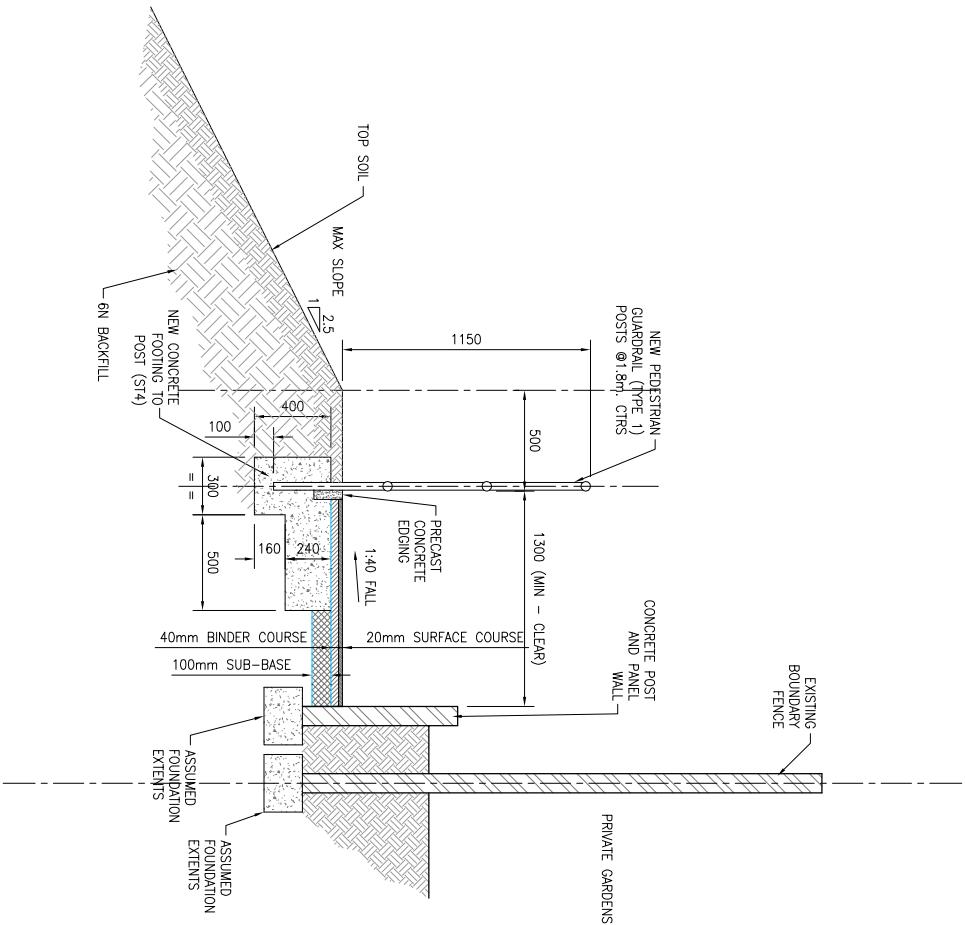
- NOTES:**
1. ALL DIMENSIONS ARE IN MILLIMETRES UNLESS STATED OTHERWISE.
  2. ALL LEVELS ARE IN METRES UNLESS STATED OTHERWISE.
  3. NO DIMENSIONS OR LEVELS SHALL BE SCALED FROM THIS DRAWING.
  4. THE EXISTING PLAN LAYOUT IS DETERMINED FROM THE TOPOGRAPHICAL SURVEY DRAWINGS.



**ADDITIONAL  
CAPPING BEAM  
DETAILS**  
HANDRAIL FIXING DETAIL  
AND DIP DETAIL  
(SCALE 1:10)



**TYPICAL PROPOSED  
SECTION**  
HIGH LEVEL BETWEEN NEW FOOTPATH  
AND RETAINING WALL  
(SCALE 1:20)



**TYPICAL JOINT DETAIL**  
(SCALE 1:20)

**Project**  
**GREENSIDE EMBANKMENT  
SLOPE STABILITY  
REMEDIAL WORKS**

**Title**  
**PROPOSED TYPICAL SECTIONS  
AND DETAILS**

Drawn	G. FLANAGAN	Signed	Date	26.07.19
Chkd	J. KOK SHUN	Signed	Date	26.07.19
Approved	D. FREEMAN	Signed	Date	26.07.19

Scale	1:20
Drawing No.	302-214-006
Status	FOR PLANNING

**Client**  
**Tameside Metropolitan Borough**  
"Great lives, excellent services"

**Wild**  
Consulting Civil & Structural Engineers

**ISO 9001**  
Bridley Lodge,  
Adcock Street,  
Salford, Greater Manchester,  
M6 6PU, UK  
Tel: 0161 475 4742  
www.wildcivil.co.uk

REV	DRN	CHK	APP	DATE	DESCRIPTION
P1	GR	JMS	BOF	22.08.2019	ISSUED FOR PLANNING